

Trame verte et bleue du SCoT Cahors Sud du Lot

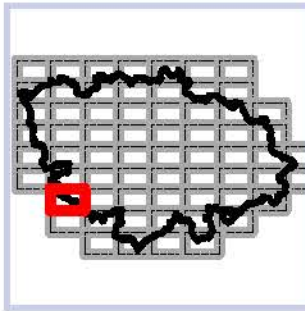
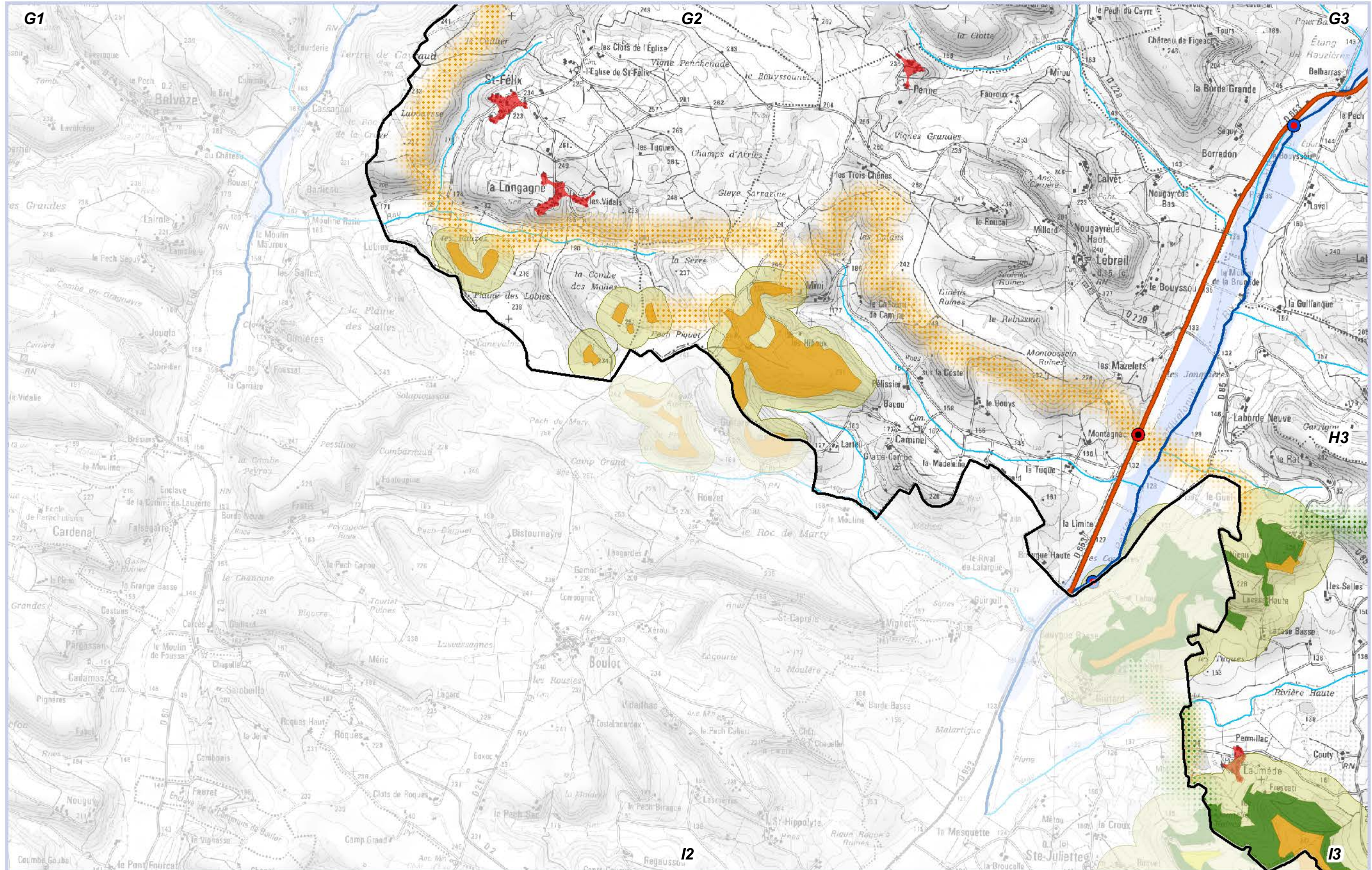


Planche H2



1:25 000



Sources : Pnr QC, SOeS, IGN, ASP, ECOTONE

Trame verte et bleue du SCoT Cahors Sud du Lot

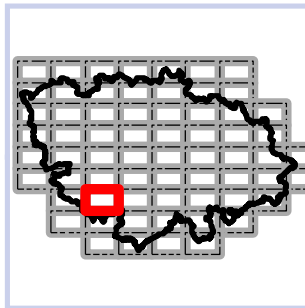
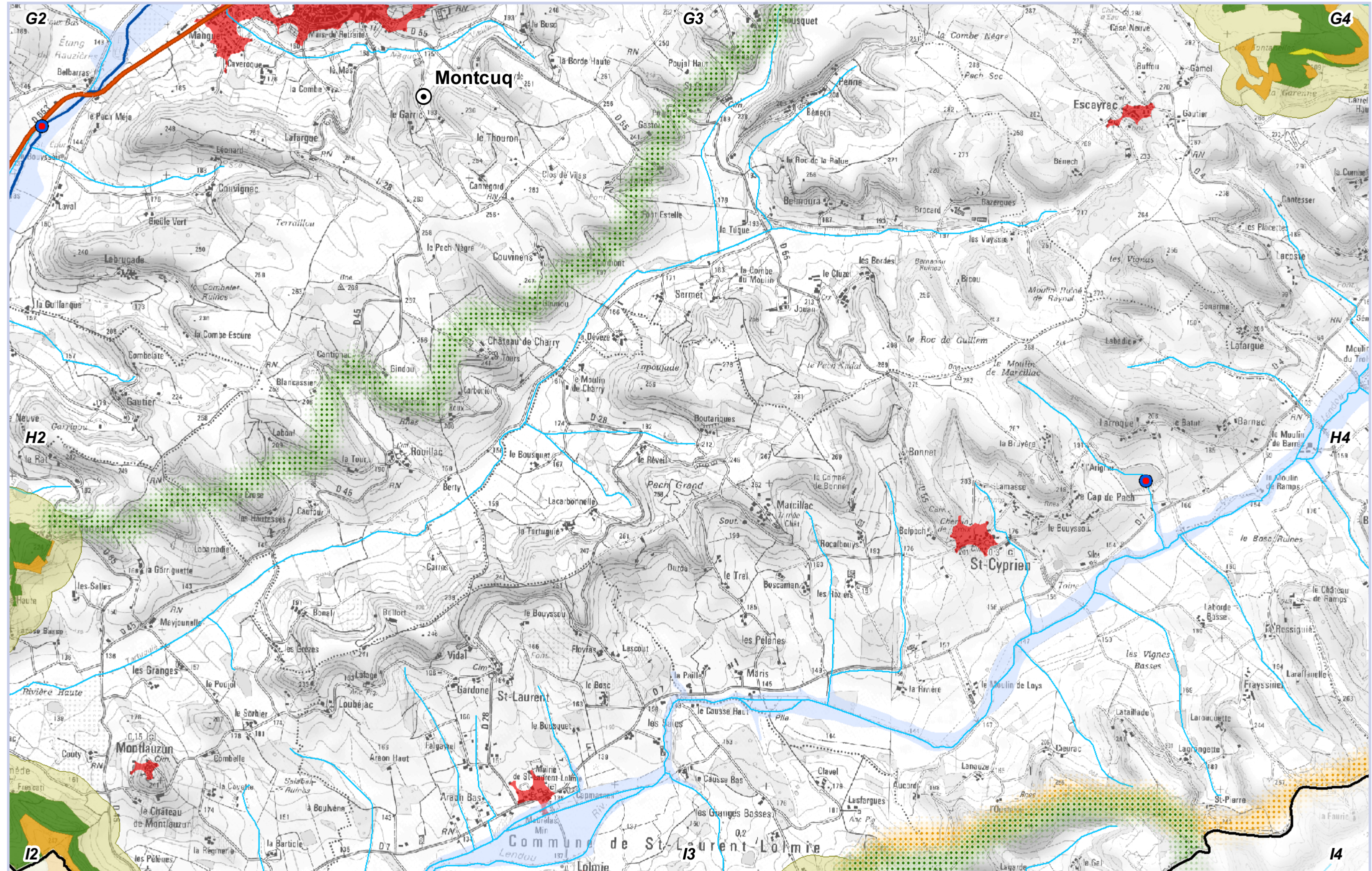


Planche H3



1:25 000



Sources : Pnr QC, SOeS, IGN, ASP, ECOTONE

Trame verte et bleue du SCoT Cahors Sud du Lot

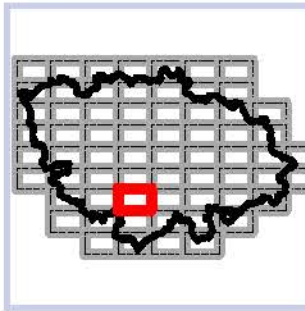
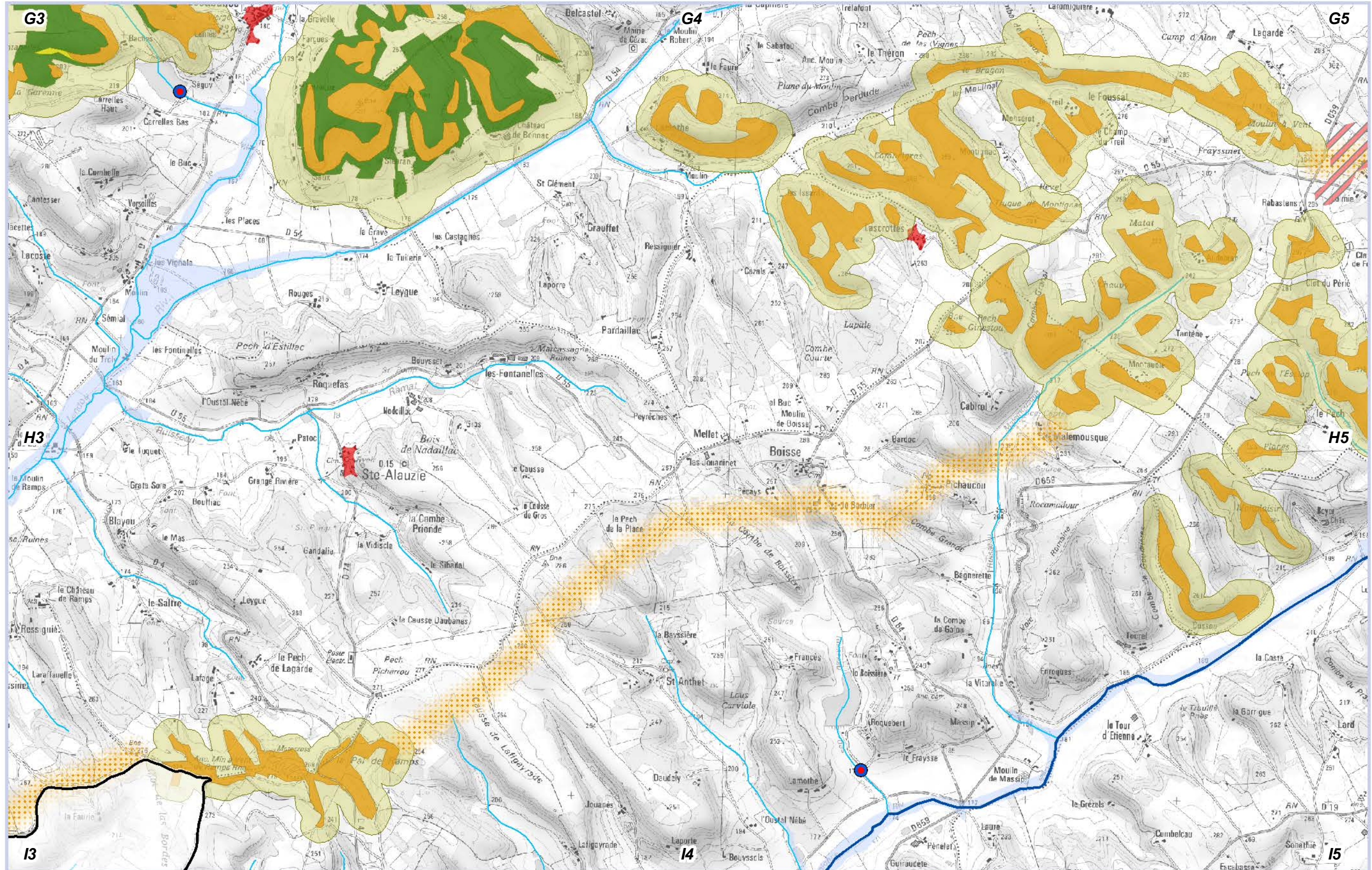


Planche H4



1:25 000



Sources : Pnr QC, SOeS, IGN, ASP, ECOTONE

Trame verte et bleue du SCoT Cahors Sud du Lot

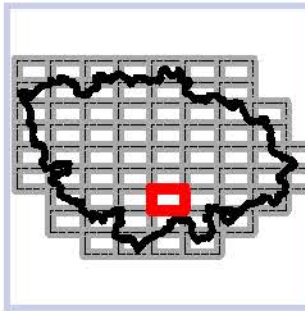
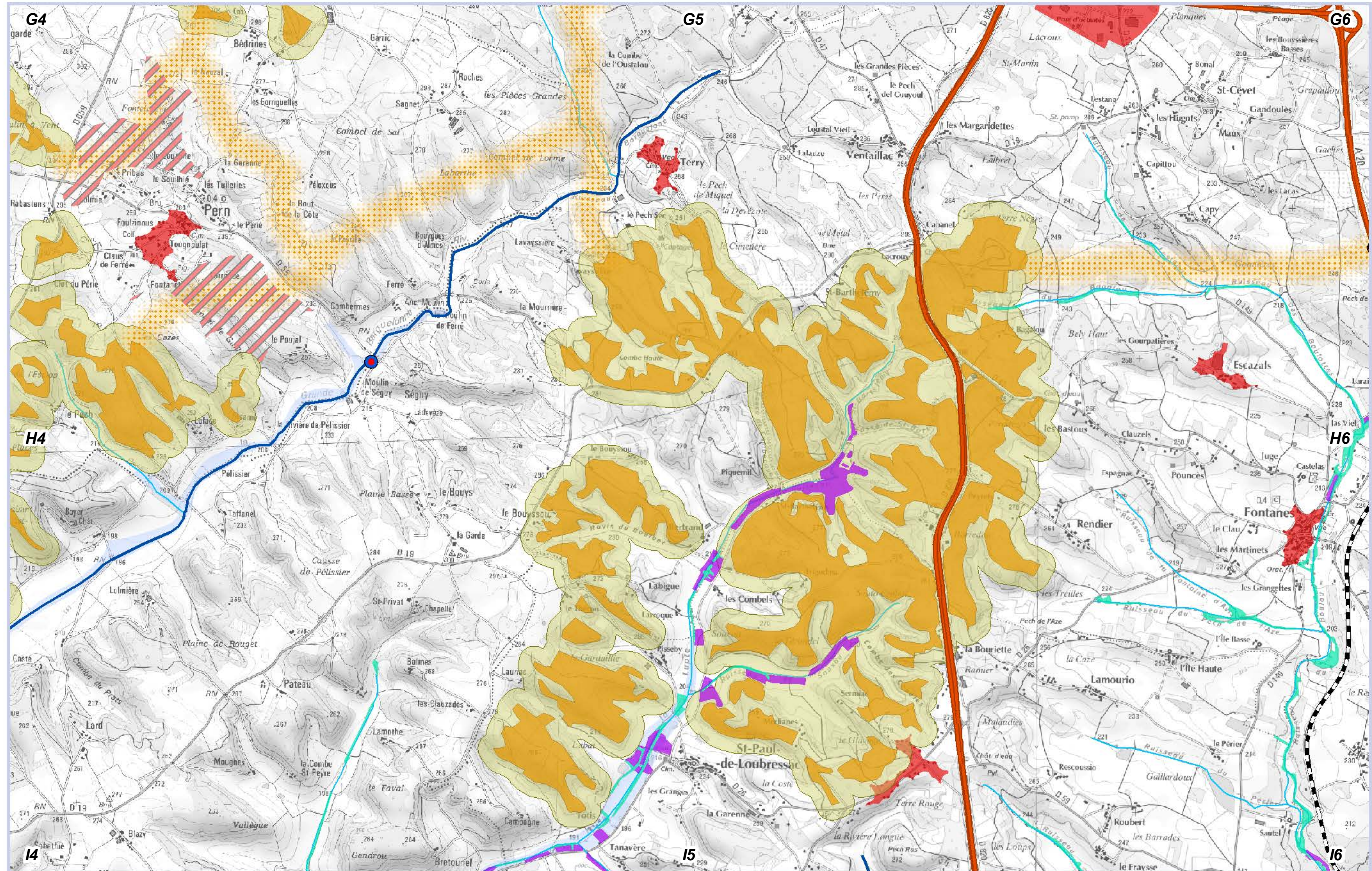


Planche H5



1:25 000



Sources : Pnr QC, SOeS, IGN, ASP, ECOTONE

Trame verte et bleue du SCoT Cahors Sud du Lot

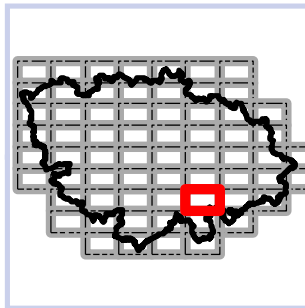
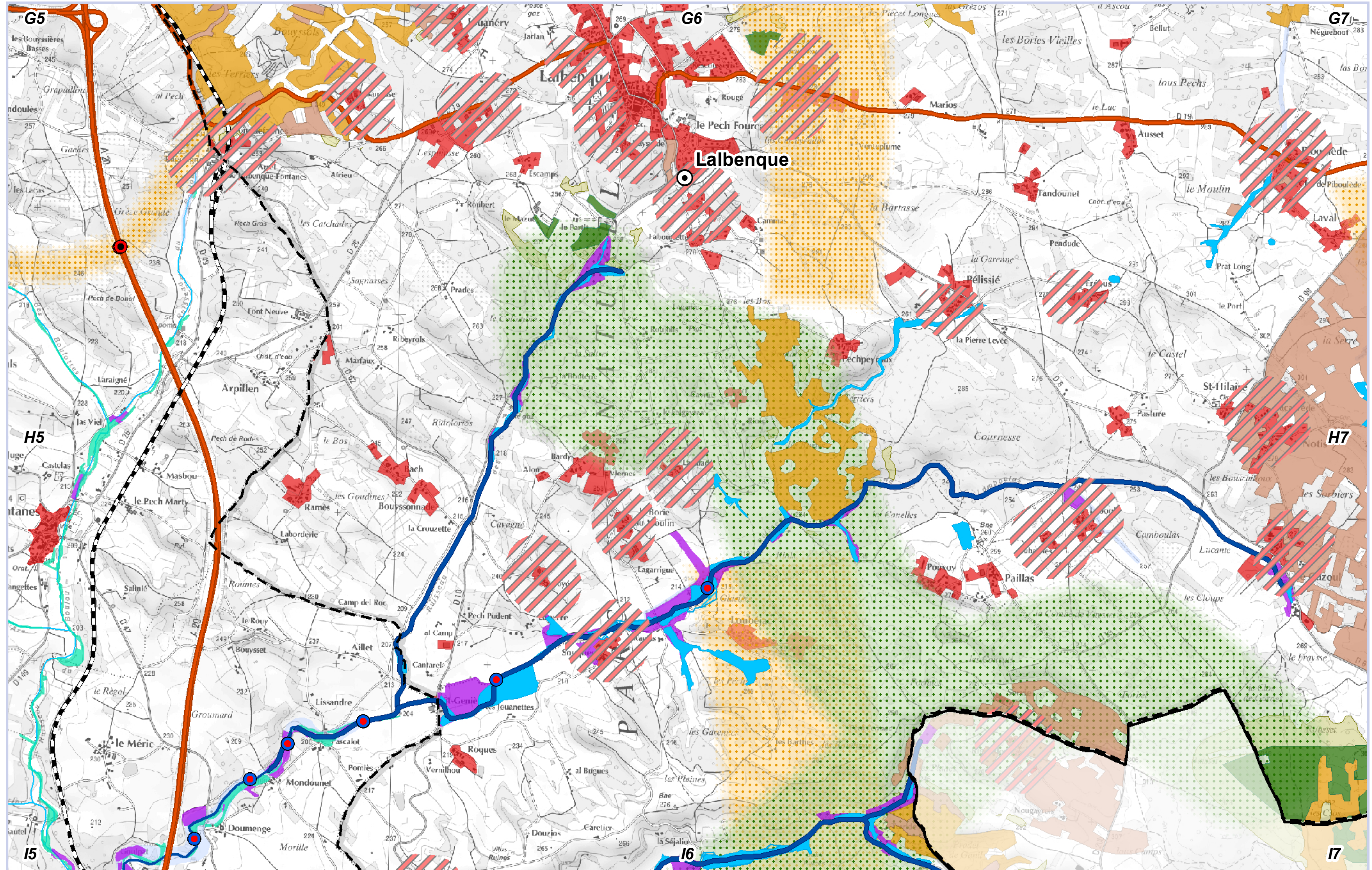


Planche H6



1:25 000



Sources : Pnr QC, SOeS, IGN, ASP, ECOTONE

Trame verte et bleue du SCoT Cahors Sud du Lot

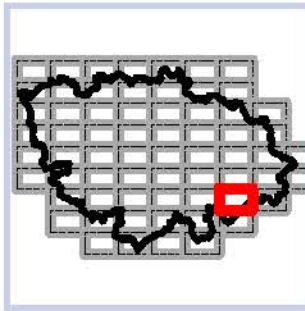
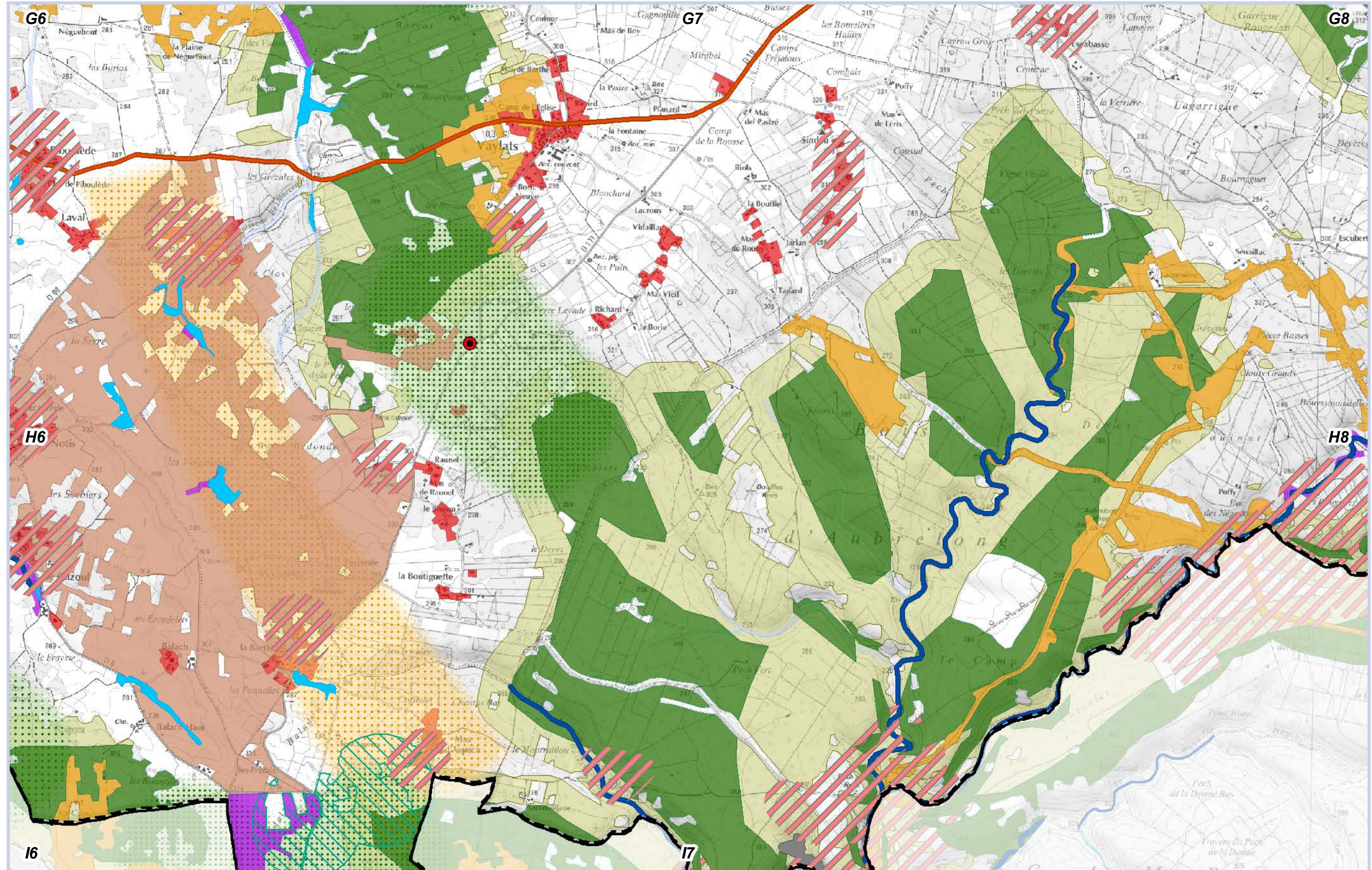


Planche H7

N

1:25 000



Sources : Pnr QC, SOeS, IGN, ASP, ECOTONE

Trame verte et bleue du SCoT Cahors Sud du Lot

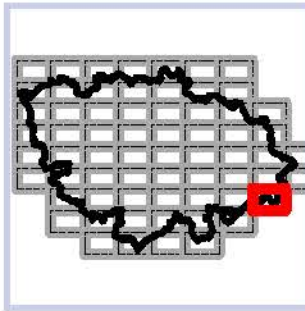
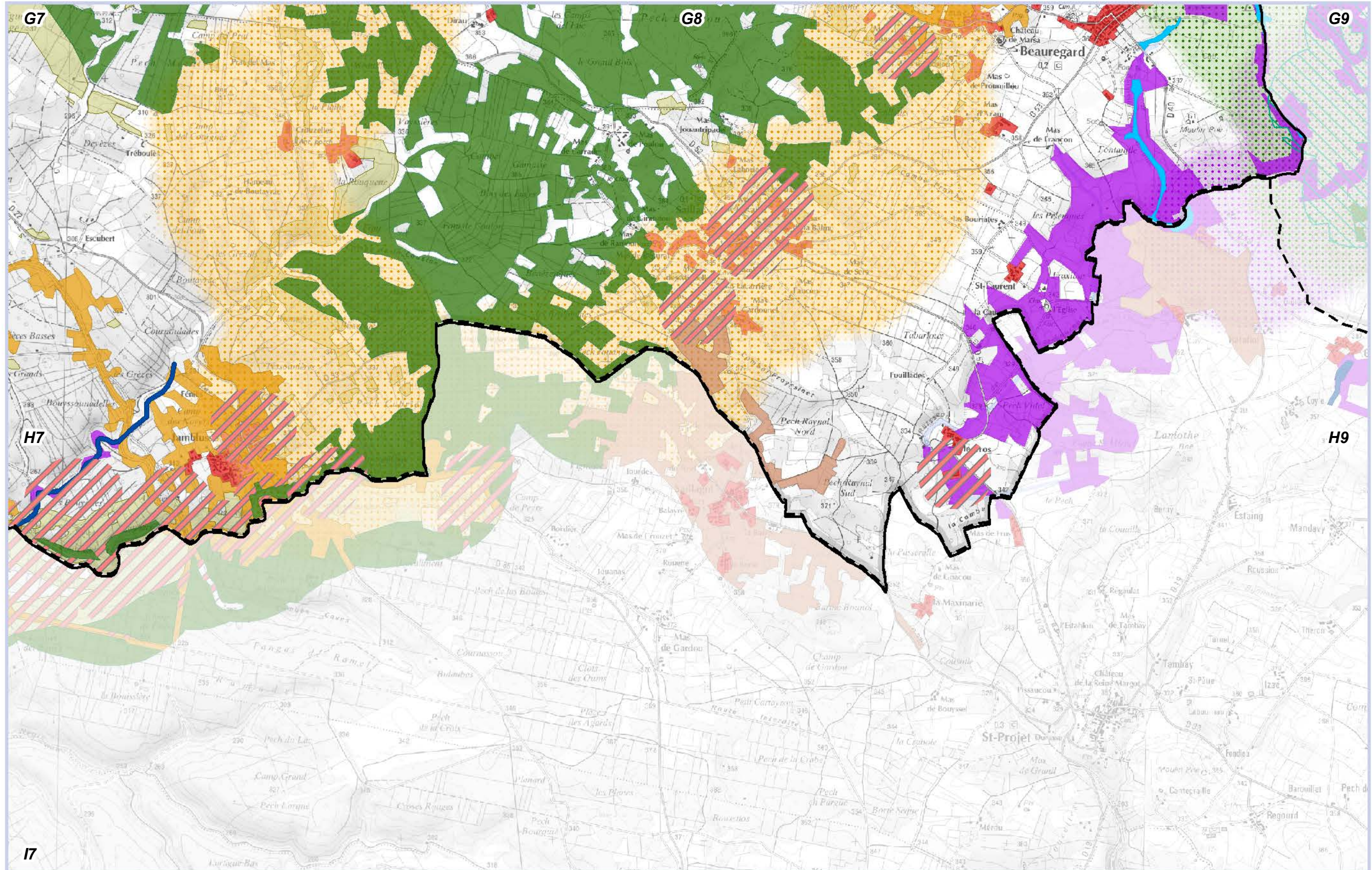


Planche H8



1:25 000



Sources : Pnr QC, SOeS, IGN, ASP, ECOTONE

Trame verte et bleue du SCoT Cahors Sud du Lot

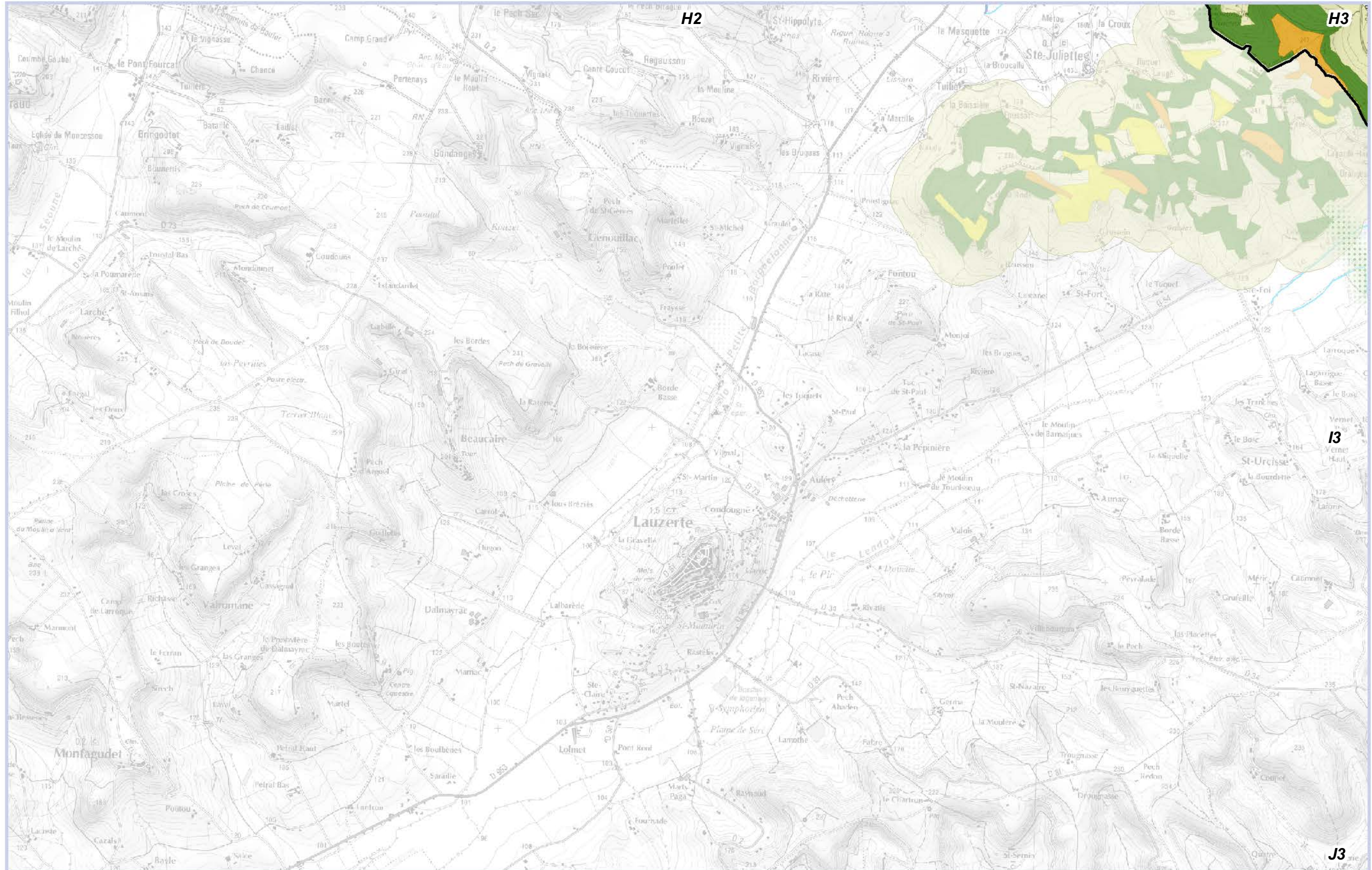
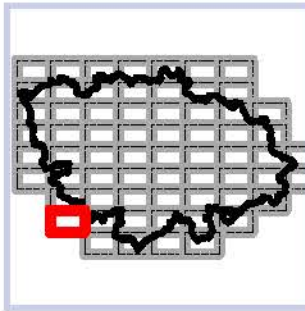


Planche I2



1:25 000

Trame verte et bleue du SCoT Cahors Sud du Lot

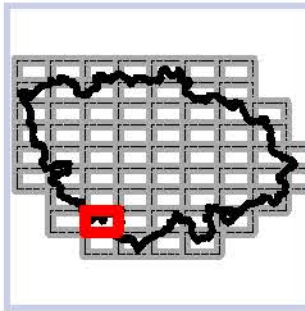
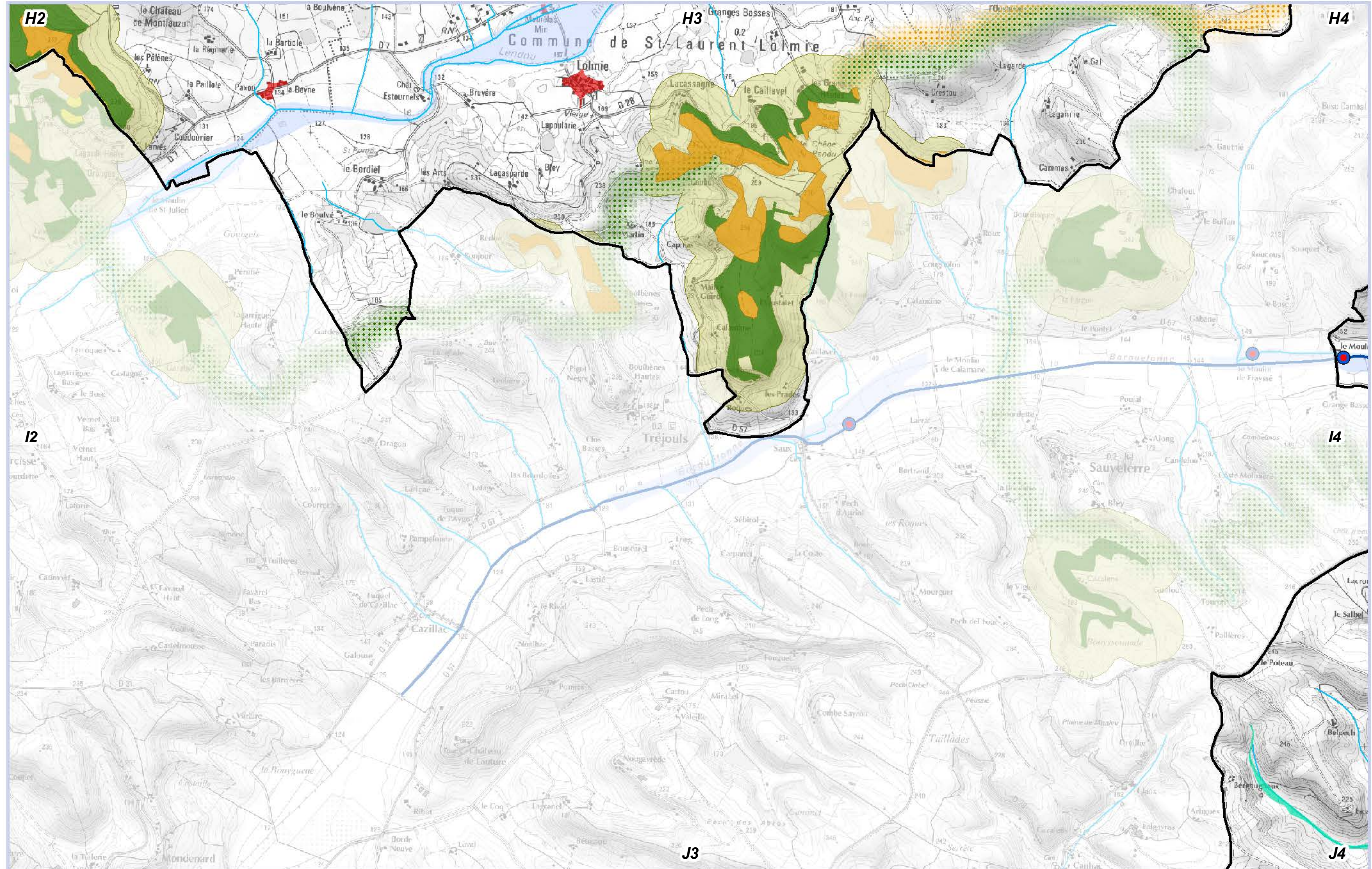


Planche I3

N

1:25 000



Sources : Pnr QC, SOeS, IGN, ASP, ECOTONE

Trame verte et bleue du SCoT Cahors Sud du Lot

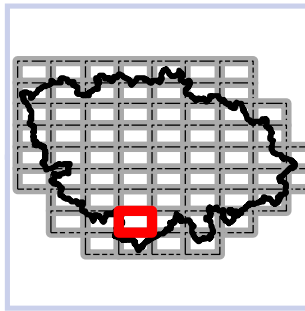
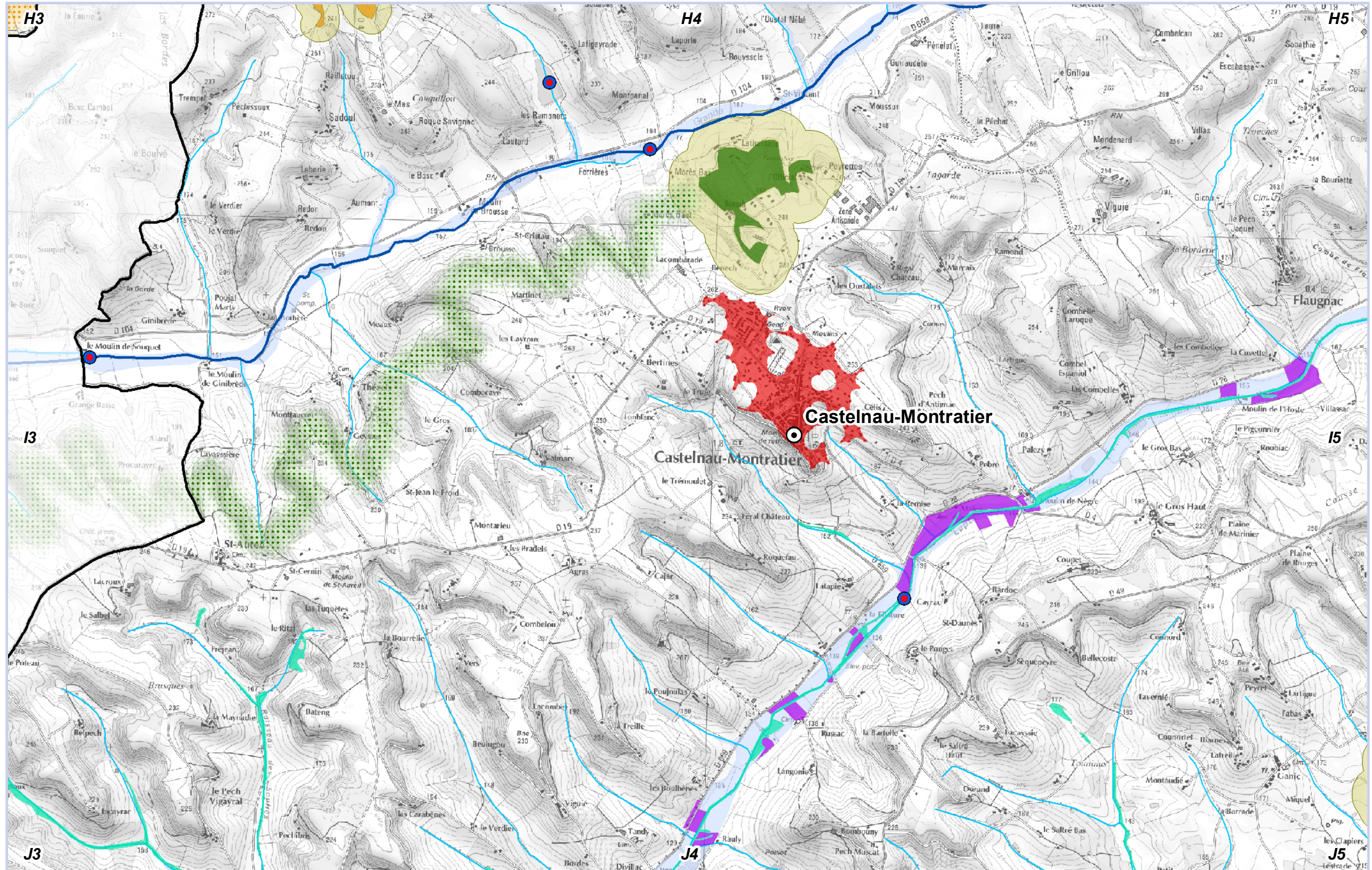


Planche I4
N
1:25 000



Trame verte et bleue du SCoT Cahors Sud du Lot

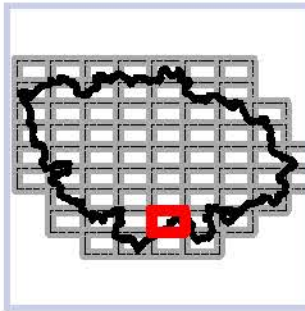
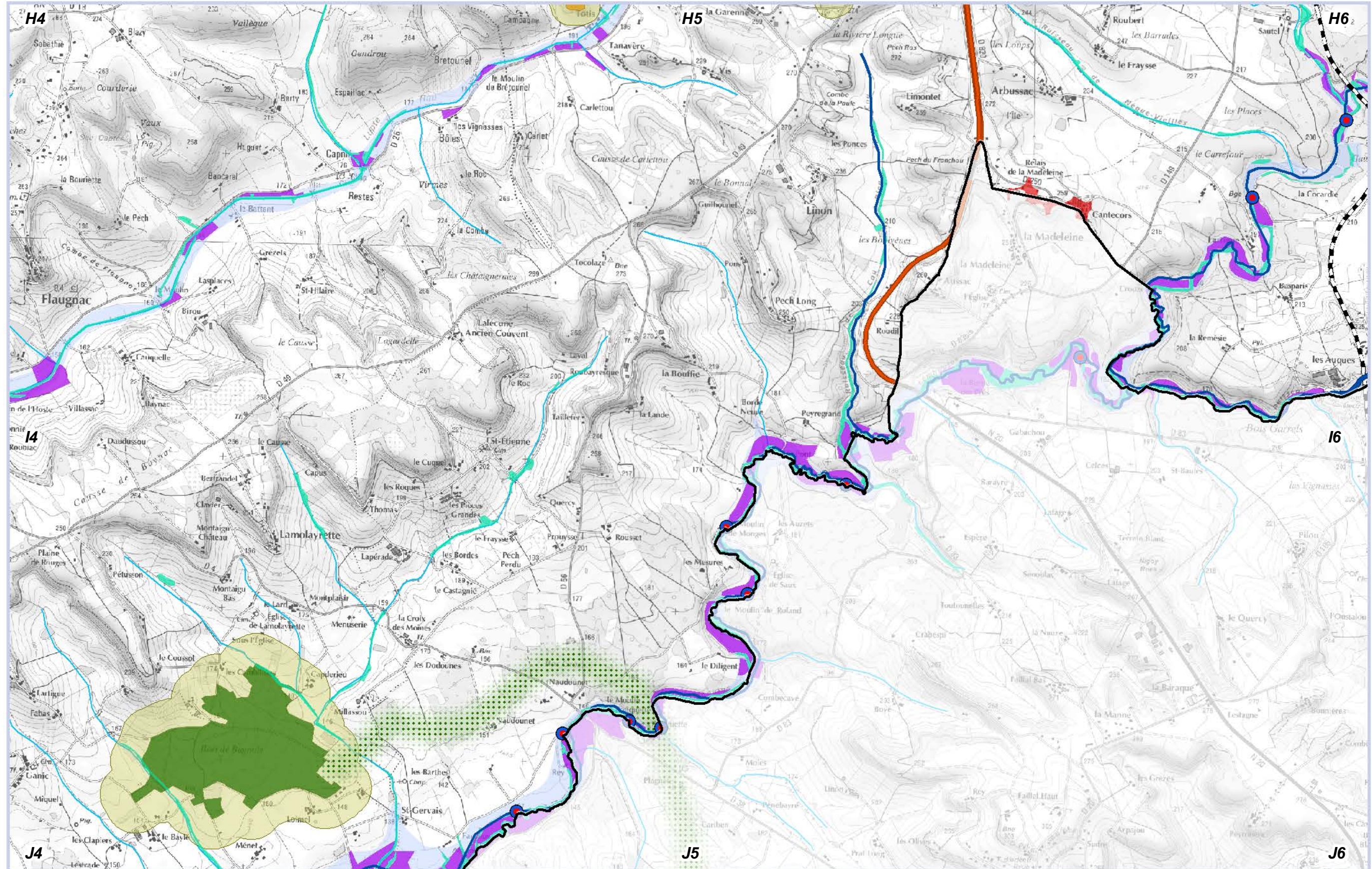


Planche I5



1:25 000



Sources : Pnr QC, SOEs, IGN, ASP, ECOTONE

Trame verte et bleue du SCoT Cahors Sud du Lot

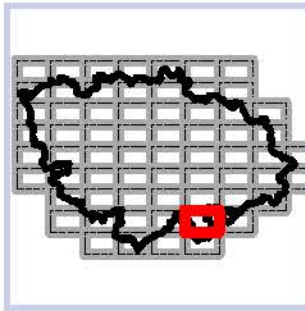
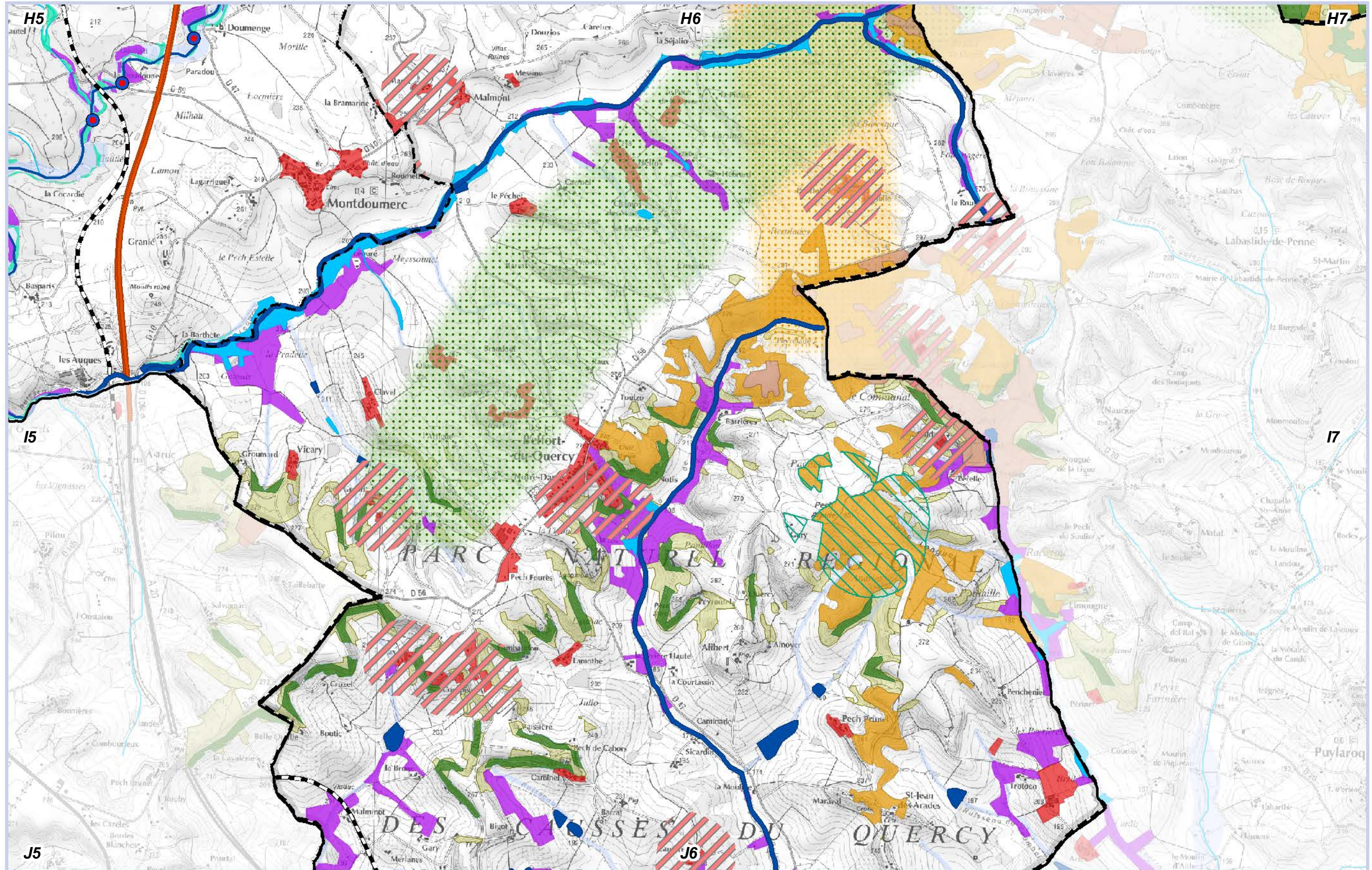


Planche I6



1:25 000



Sources : Pnr QC, SOeS, IGN, ASP, ECOTONE

Trame verte et bleue du SCoT Cahors Sud du Lot

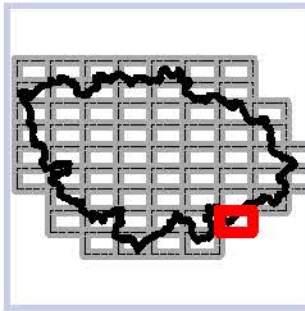
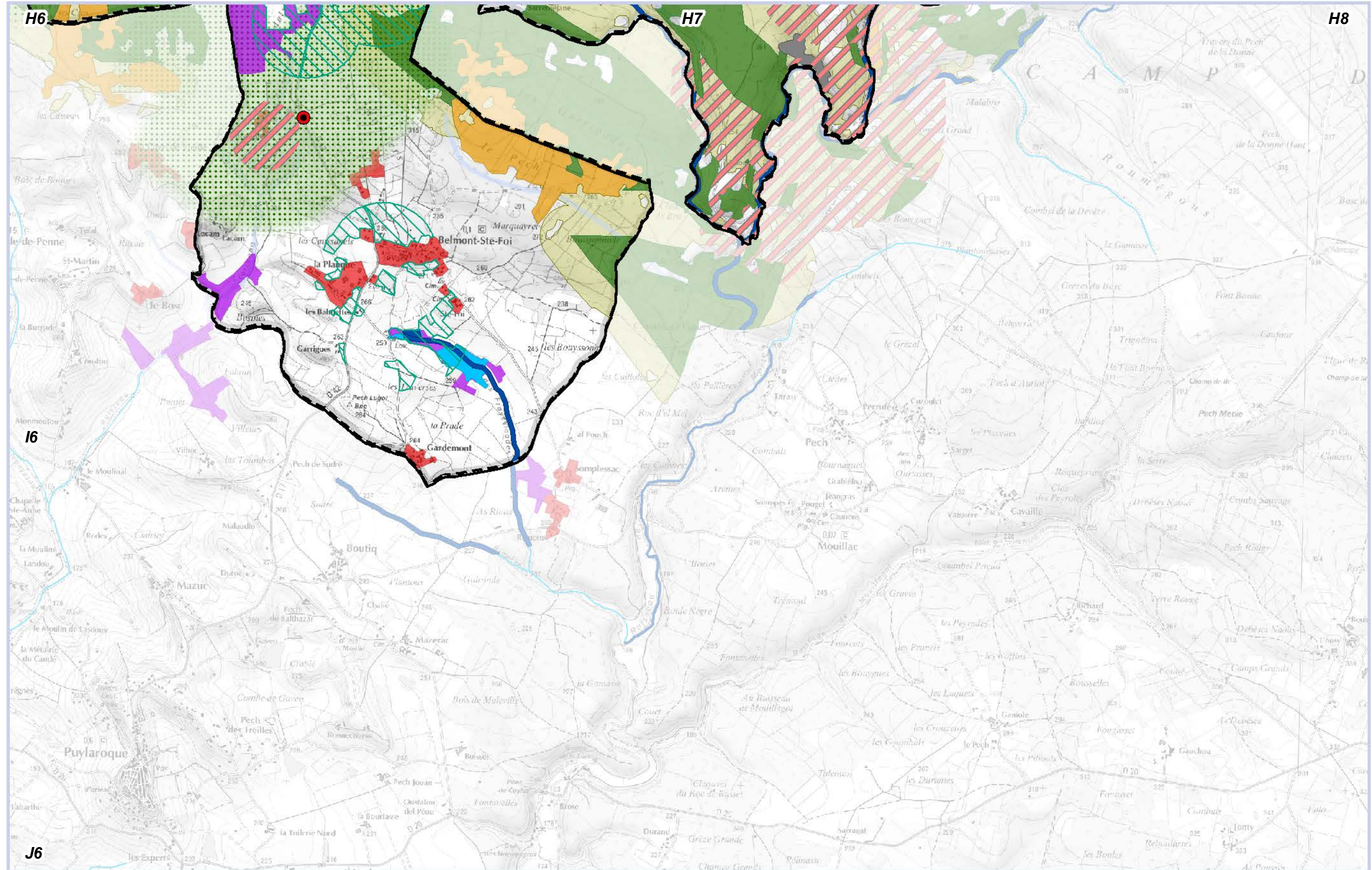


Planche I7

N

1:25 000



Sources : Pnr QC, SOeS, IGN, ASP, ECOTONE

Trame verte et bleue du SCoT Cahors Sud du Lot

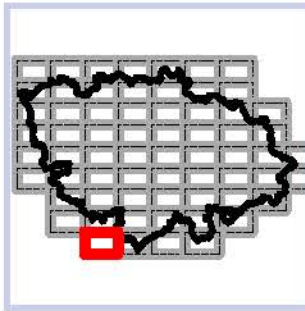
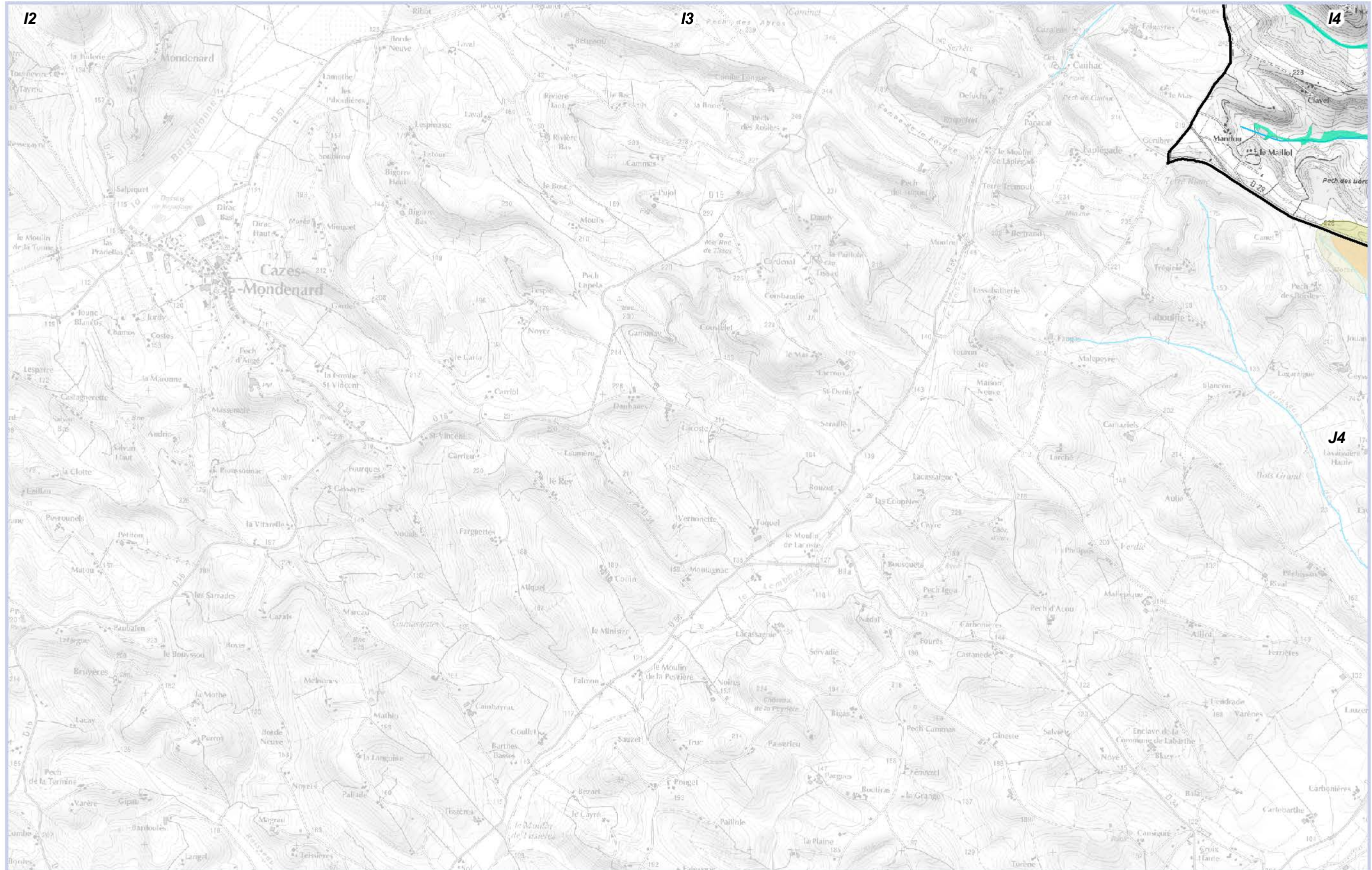


Planche J3



1:25 000



Sources : Pnr QC, SOeS, IGN, ASP, ECOTONE

Trame verte et bleue du SCoT Cahors Sud du Lot

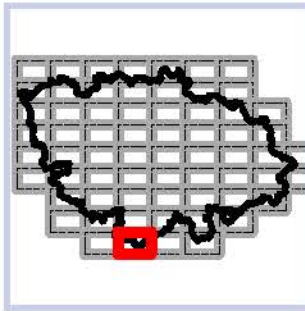
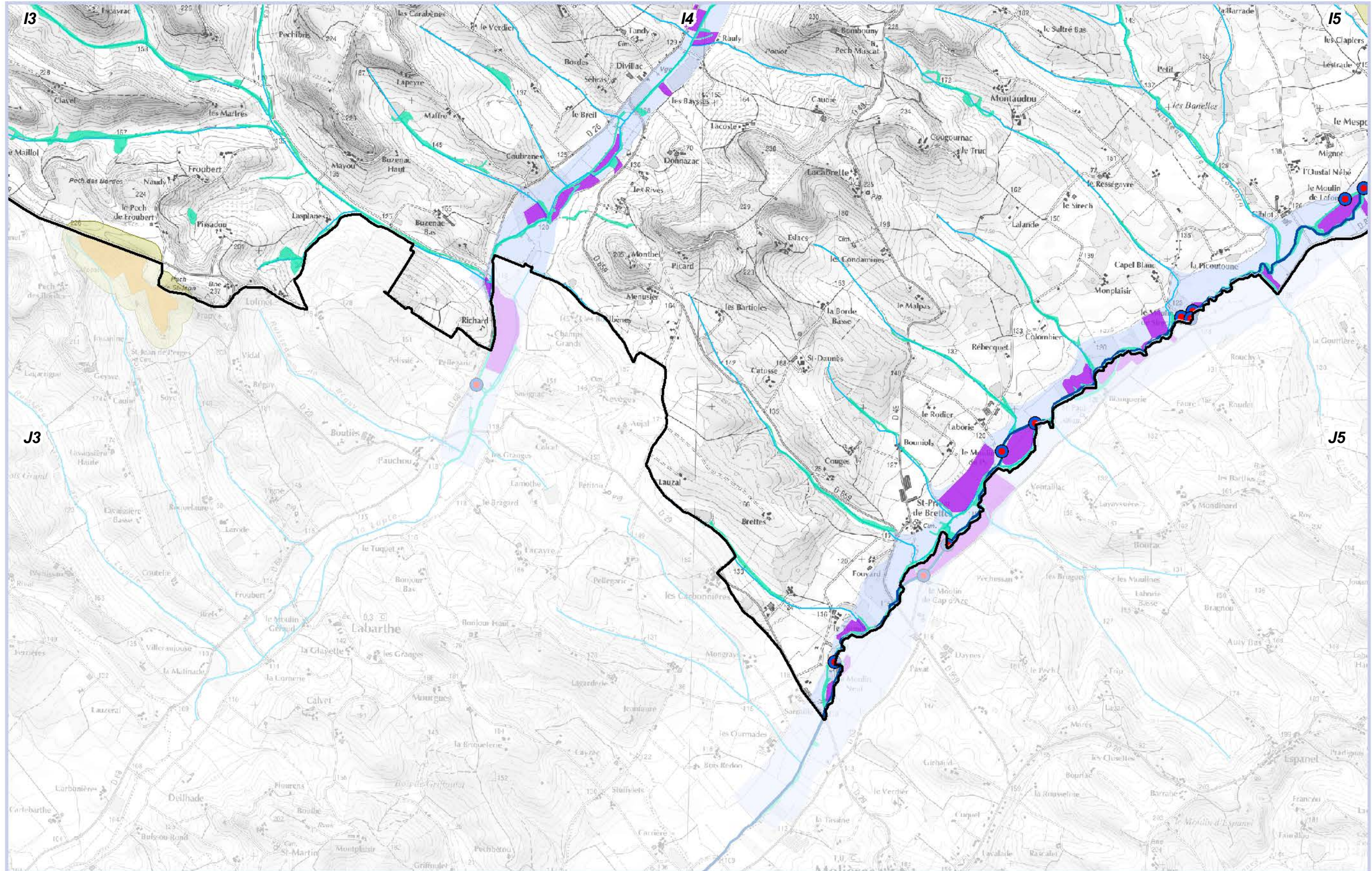


Planche J4



1:25 000



Sources : Pnr QC, SOeS, IGN, ASP, ECOTONE

Trame verte et bleue du SCoT Cahors Sud du Lot

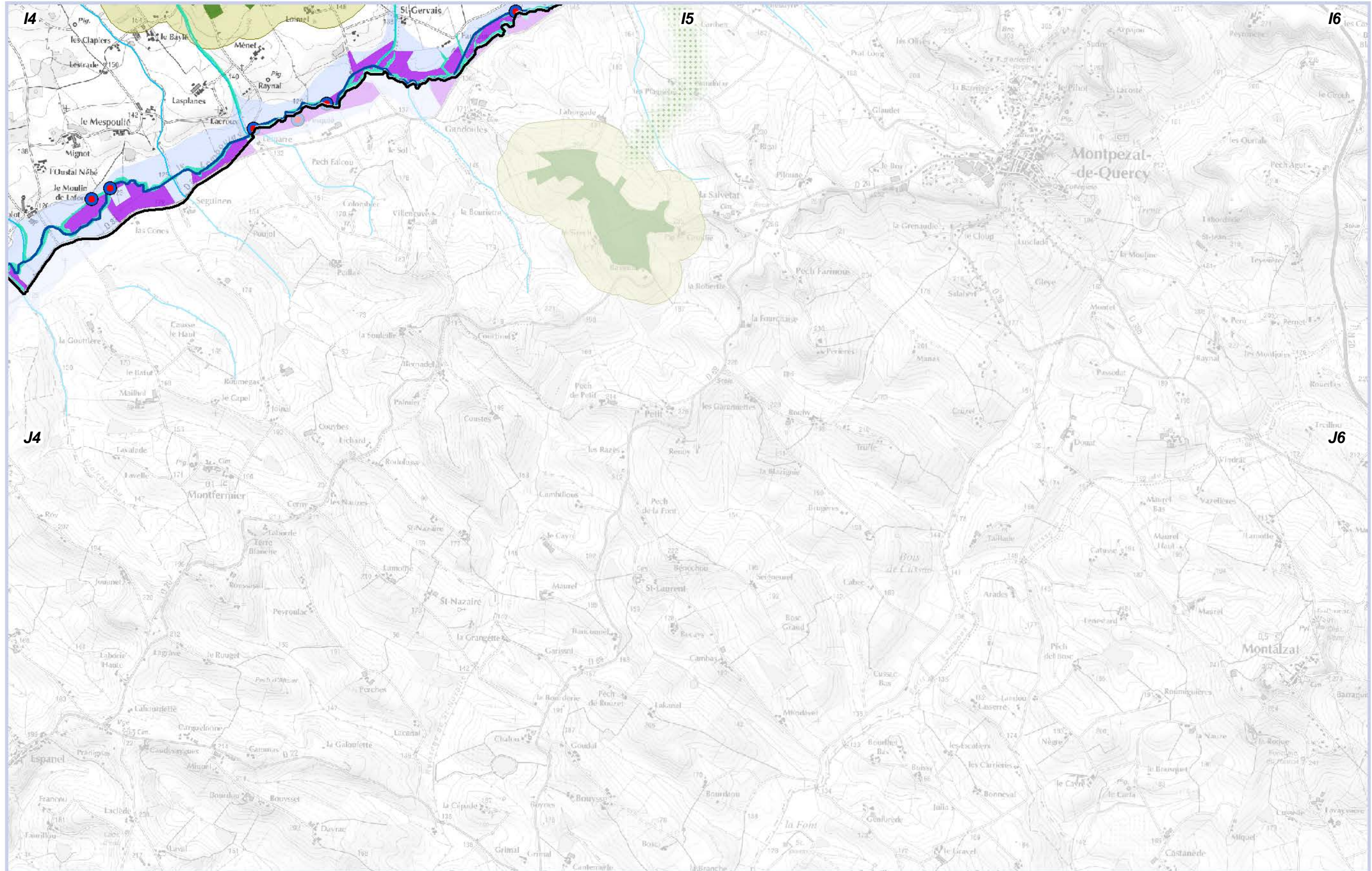
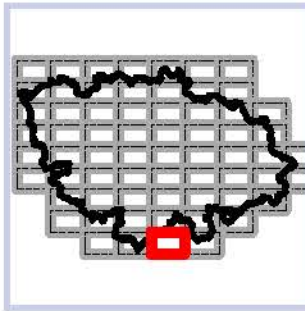


Planche J5



1:25 000

Trame verte et bleue du SCoT Cahors Sud du Lot

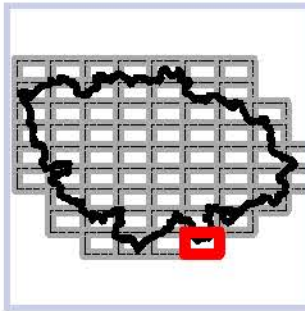
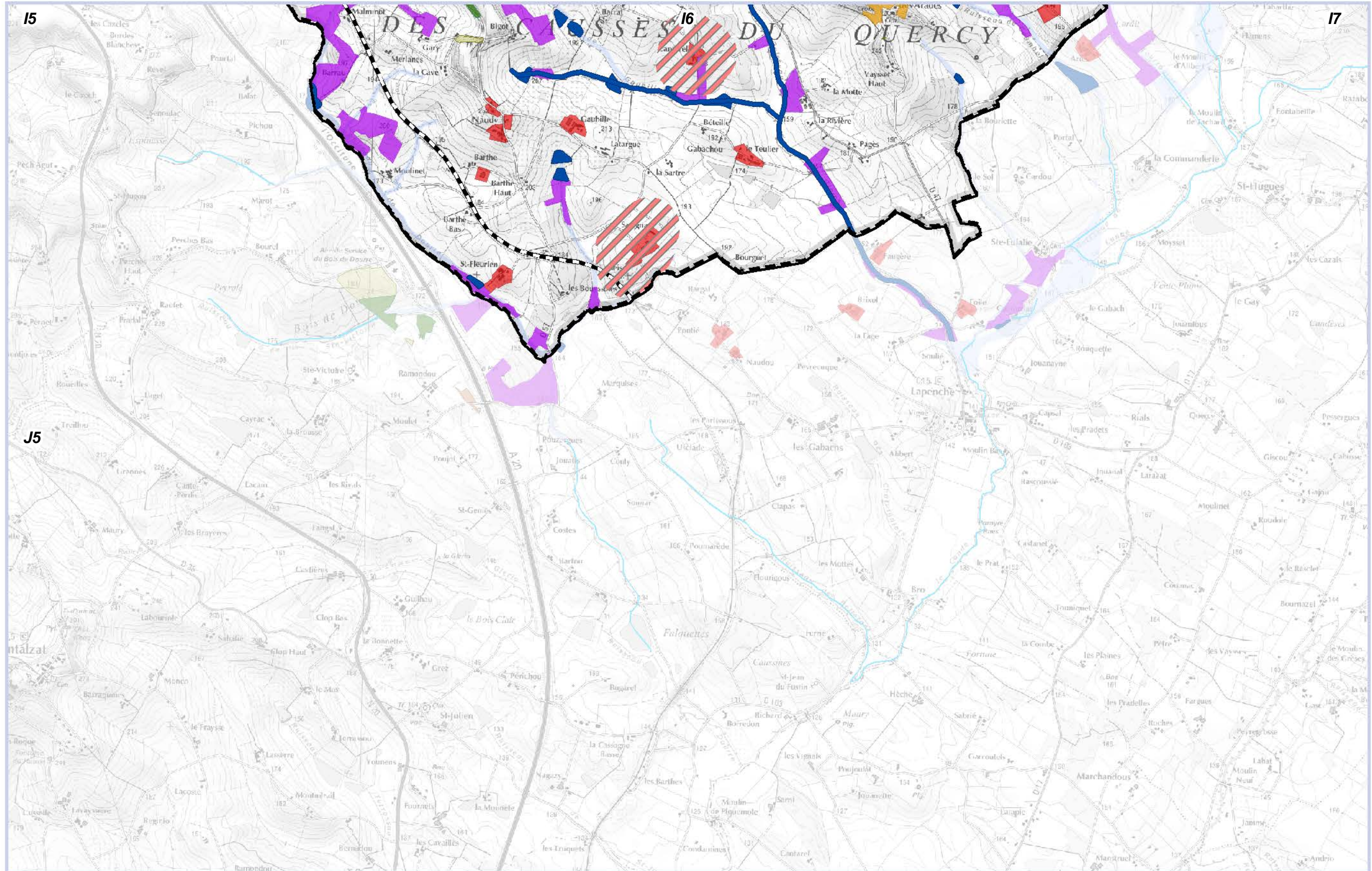


Planche J6



1:25 000



Sources : Pnr QC, SOEs, IGN, ASP, ECOTONE